



PeaceHealth

CONTRACT REPORT

About the End User

Peace Health Sacred Heart Medical Center (Riverbend) is a 392-bed Hospital and is one of two Sacred Heart facilities located in Springfield, US. Riverbend is the only Hospital outside of the Portland area to offer pediatric surgery.

Scope of Project

The original Webster burners were not performing as desired, as the boiler plant was found to have the incorrect level of redundancy – the plant was short one boiler. The final scope was to add a fourth boiler to the boiler house and upgrade each burner to Limpsfield burners due to the superior quality of the Limpsfield equipment. One of the greatest improvements recorded since commissioning was the **reduction in noise pollution**.

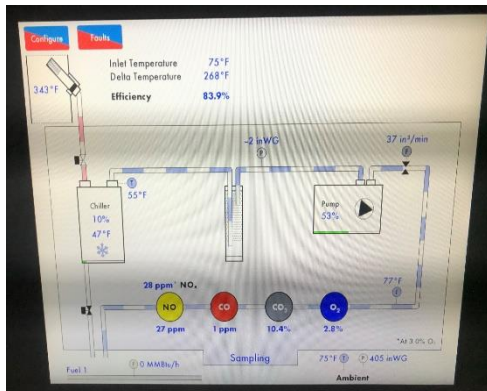
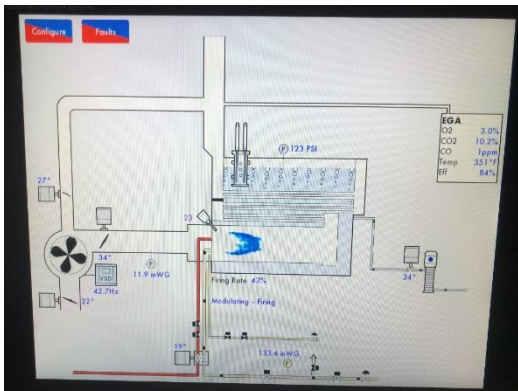
Customer:
MacDonald Miller

Location:
*Peace Health
Riverbend,
Oregon, USA*

Boiler Type:
*Superior Boiler
Hurst Boiler*

Burner Model:
LC100

Fuels:
*#2 Oil
Natural Gas*



As shown by the MM Mk8 (left), Limpsfield burners can achieve 3% O2, even at 42% firing rate. The customer can also view detailed boiler/burner performance data in real-time, such as seen on the EGA (right).

Limpsfield burners can be tailored to maximize plant efficiency, and reduce footprint (factory space) due to customised burner assembly.

Limpsfield Combustion Engineering offers THE complete burner package solution.

Salient features

- 3% O2 across the complete firing range, with sub 30ppm NOx.
- Complete remote monitoring package
- Constant emissions monitoring system (CEMS)



Before (left) and After (right) the installation and commissioning of the Limpsfield LC100 Burner on Superior Boilers. Photograph courtesy of Macdonald Miller.

Limpsfield LC100 Burner on the New Hurst Boiler. Photograph courtesy of Macdonald Miller.

For more information on the Limpsfield Burner range, please do not hesitate to contact us.

Email: sales@limpsfield.co.uk

Website: www.limpsfield.co.uk

LinkedIn: <https://www.linkedin.com/company/limpsfield-combustion>

