



contract report



Customer:
Northwick Park Hospital

Location:
London, UK

Boiler Type:
Wellman Robey twin furnace boilers

Burner Model:
LCNO36

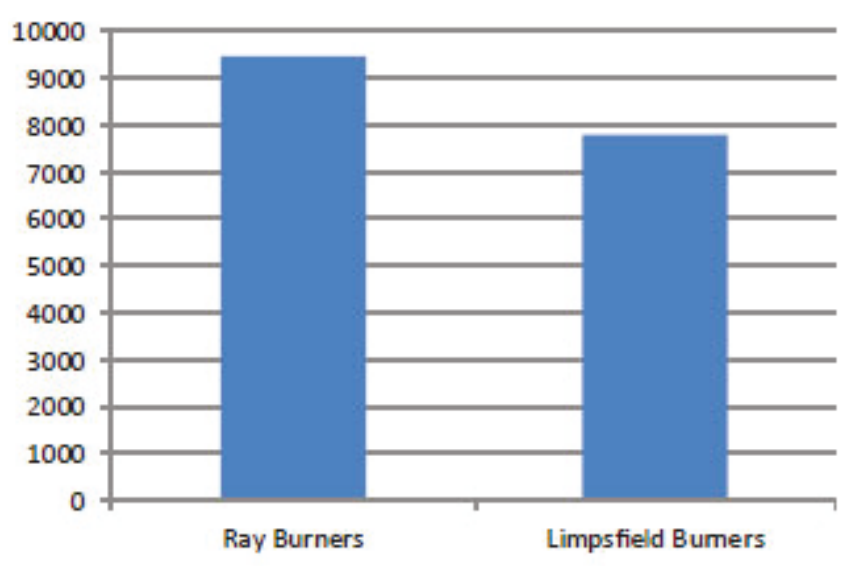
Fuels:
Natural Gas
#2 Oil

Fuel Savings:
13%

The North West London NHS Trust, which looks after numerous hospitals in London, were required by the Carbon Reduction Commitment legislation (CRC) to reduce their hospitals' annual emissions.

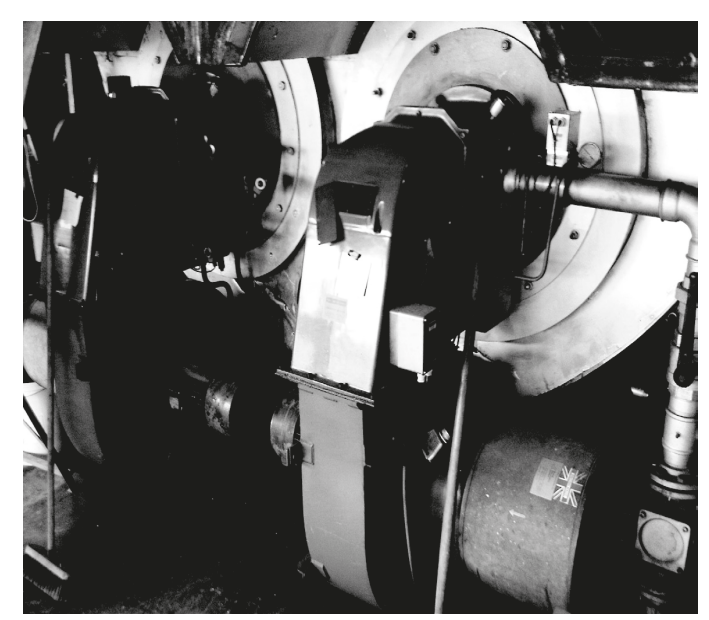
Their project in Northwick Park Hospital, based in Middlesex, was to increase the hospital's boiler combustion efficiency as well as reduce annual fuel costs by upgrading one of the hospital's three twin furnace boilers to a more efficient and cost-effective installation.

The hospital employed two Limpsfield LCNO36 dual fuel burners, firing both Natural Gas and #2 Fuel Oil along with Autoflame burner control systems due to their high combustion turndowns and low emission rates to replace the existing inefficient burners.

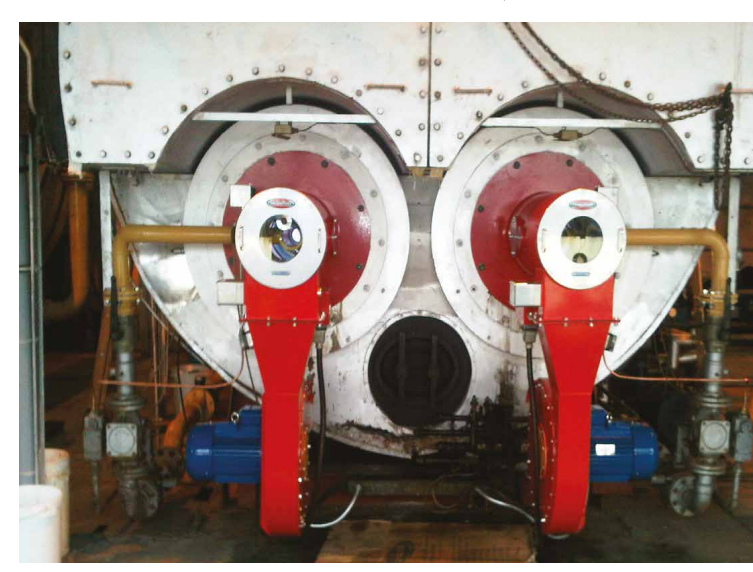


The overall combustion efficiency of the boiler was greatly increased following the installation and, as a result, its annual consumption of gas was cut by 13% and the hospital's overall carbon footprint was

The North West London NHS have since not only met the CRC emissions requirement, but also secured a number one ranking in the CRC League table, a score held by only 21 other organisations.



Before: Dated inefficient Ray burners



After: Limpsfield dual fuel burners with Auto-flame controls.

For more information on the Limpsfield burner range, please do not hesitate to contact us.



Website: www.limpsfield.co.uk
Tel: 00 44 (0)1959 576 633
Fax: 00 44 (0)1959 576 644

